

Job Name/Location:

Tag No.:

Date:

For:	File	Resubmit
	Approval	Other

PO No.:

Architect: GC:

Engr: Mech:

Rep: (Company) (Project Manager)



KSUDA181A
R32 Single-Zone 2x2 Four-Way Ceiling Cassette with LGRED®
Outdoor Unit (ODU) - KUSXA181A, Indoor Unit (IDU) - KNUDB181A



Performance:

Cooling:

Cooling Capacity (Min~Rated~Max, Btu/h)	7,200~18,000~23,000
SEER2	20.5
EER2	13.2

SEER - Seasonal Energy Efficiency Ratio EER - Energy Efficiency Ratio

Heating:

Heating Capacity (Min~Rated~Max, Btu/h)	6,500~20,000~24,000
HSPF2	9.5
Max. Heating @ Indoor 70°F DB (Btu/h)	
Outdoor 17°F WB	22,500
Outdoor 5°F WB	20,000
Outdoor -4°F WB	17,900
Outdoor -13°F WB	15,500

HSPF - Heating Seasonal Performance Factor Heating Nominal Test Conditions:
Cooling Nominal Test Conditions: Indoor: 70°F DB / 60°F WB
Indoor: 80°F DB / 67°F WB Outdoor: 47°F DB / 43°F WB
Outdoor: 95°F DB / 75°F WB

Electrical:

Power Supply (V/Hz/Ø)	208-230/60/1
MOP (A)	30
MCA (A)	19.1
Cooling / Heating Rated Amps (A)	15.85 / 15.85
Compressor (A)	14.0
Fan Motor (IDU + ODU) (A)	0.25 + 1.6
Cooling Power Input (Min~Rated~Max, kW)	0.50~1.37~2.80
Heating Power Input (Min~Rated~Max, kW)	0.46~1.73~2.6
Locked Rotor Amps (A)	11.5

MOP - Maximum Overcurrent Protection MCA - Minimum Circuit Ampacity

Piping:

Installed Liquid Pipe (in., O.D.)	3/8 Flare
Installed Vapor Pipe (in., O.D.)	5/8 Flare
IDU Liquid Connection (in., O.D.)	3/8 Flare
IDU Vapor Connection (in., O.D.)	5/8 Flare
Additional Refrigerant (oz./ft.)	0.38
Min. / Max. Pipe Length (ft.) ²	16.4 / 164
Piping Length (no add'l refrig., ft.)	24.6
Max. Elevation (ft.)	98.4

Features:

- Inverter (Variable Speed Compressor)
- Internal Condensate Pump
- Swirl Wind
- Jet Cool
- Auto Restart
- Auto Changeover
- Drain pan heater
- Ultra-quiet Turbo Fan
- Night Quiet Function
- Optional Wi-Fi Control
- IDU compatible with Multi F ODUs

Included Accessories:

- Wireless Remote Controller - PQWRHQ0FDB

Required Accessories:

- Grille Kit - PT-QAGW0

Optional Accessories:

- Ventilation Flange - PTVK430
- Auxiliary Heater Kit
- Wi-Fi Module - PWFMD200
- Drain Pan Heater - PQSH1200
- Low Ambient Wind Baffle (Cooling operation to -4°F) - ZLABGP04B¹¹

Controller Options:

- MultiSITE™ CRC* Controllers
- Simple Remote Controller
- Standard III Remote Controllers
- Remote Temperature Button Sensor
- Deluxe Remote Controller
- Dry Contacts
- AHU Communication Kit

Proper sizing and installation of equipment is critical to achieve optimal performance. Split system air conditioners and heat pumps (excluding ductless systems) must be matched with appropriate coil components to meet ENERGY STAR® criteria. Ask your contractor for details or visit www.energystar.gov. (ENERGY STAR and the ENERGY STAR mark are registered trademarks owned by the U.S. Environmental Protection Agency.)

For a complete list of available accessories, contact your LG representative.

For continual product development, LG reserves the right to change specifications without notice.

© LG Electronics U.S.A., Inc., Englewood Cliffs, NJ. All rights reserved. "LG Life's Good" is a registered trademark of LG Corp. /www.lghvac.com

Operating Range:

Outdoor Unit:

Cooling (°F DB)	5 ~ 118
Heating (°F WB)	-13 ~ +64

Indoor Unit:

Cooling (°F WB)	57 ~ 77
Heating (°F DB)	59 ~ 81

System Data:

Refrigerant Type	R32
Refrigerant Control	EEV
Refrigerant Charge (lbs.)	4.19
ODU Sound Pressure (Cooling / Heating) (±1 dB[A]) ³	51 / 52
IDU Sound Pressure (H/M/L/SL) (±1 dB[A]) ³	41 / 39 / 36
ODU Net / Shipping Weight (lbs.)	141.8 / 160.1
IDU Net / Shipping Weight (lbs.)	30.9 / 37
Grille Net Weight (lbs.)	6.6 / 8.8
Heat Exchanger Coating	GoldFin™

Fan:

ODU Type	Propeller
IDU Type	Turbo
Fan Speeds (Fan/Cool/Heat)	4 / 5 / 4
Quantity (ODU + IDU)	1 + 1
Motor/Drive	Brushless Digitally Controlled/Direct
Maximum ODU Air Volume (CFM)	2,048
IDU Air Flow (CFM Max./H/M/L)	459 / 424 / 388
Dehumidification (pts./hr.)	3.1

Notes:

1. Acceptable operating voltage: 187V-253V.
2. Piping lengths are equivalent.
3. Sound Pressure levels are tested in an anechoic chamber under ISO Standard 3745.
4. All power supply wiring to the outdoor unit is field supplied, solid or stranded. The power wiring and the communication wiring from the outdoor unit to the indoor unit is field supplied and must be stranded, shielded or unshielded (if shielded, it must be grounded to the chassis of the outdoor unit only). All wiring must comply with applicable local and national codes.
 - a. Power Supply Wiring to Outdoor Unit (No. x AWG): 3 x 12 for 9k, 12k, 18k, and 24k; 3 x 10 for 30k, 36k, 42k, and 48k.
 - b. Power Wiring and Communication Wiring from Outdoor Unit to Indoor Unit (No. x AWG): 3 x 14 / 2 x 18.
5. See Engineering Manual for sensible and latent capacities.
6. This unit comes with a dry helium charge.
7. This data is rated 0 ft. above sea level, with 24.6 ft. of refrigerant line and a 0 ft. level difference between outdoor and indoor units.
8. Must follow installation instructions in the applicable LG installation manual.
9. Multi compatible 18k IDUs include socket adapters for refrigerant pipe connections with Single Zone systems.



KSUDA181A

R32 Single-Zone 2x2 Four-Way Ceiling Cassette with LGRED*

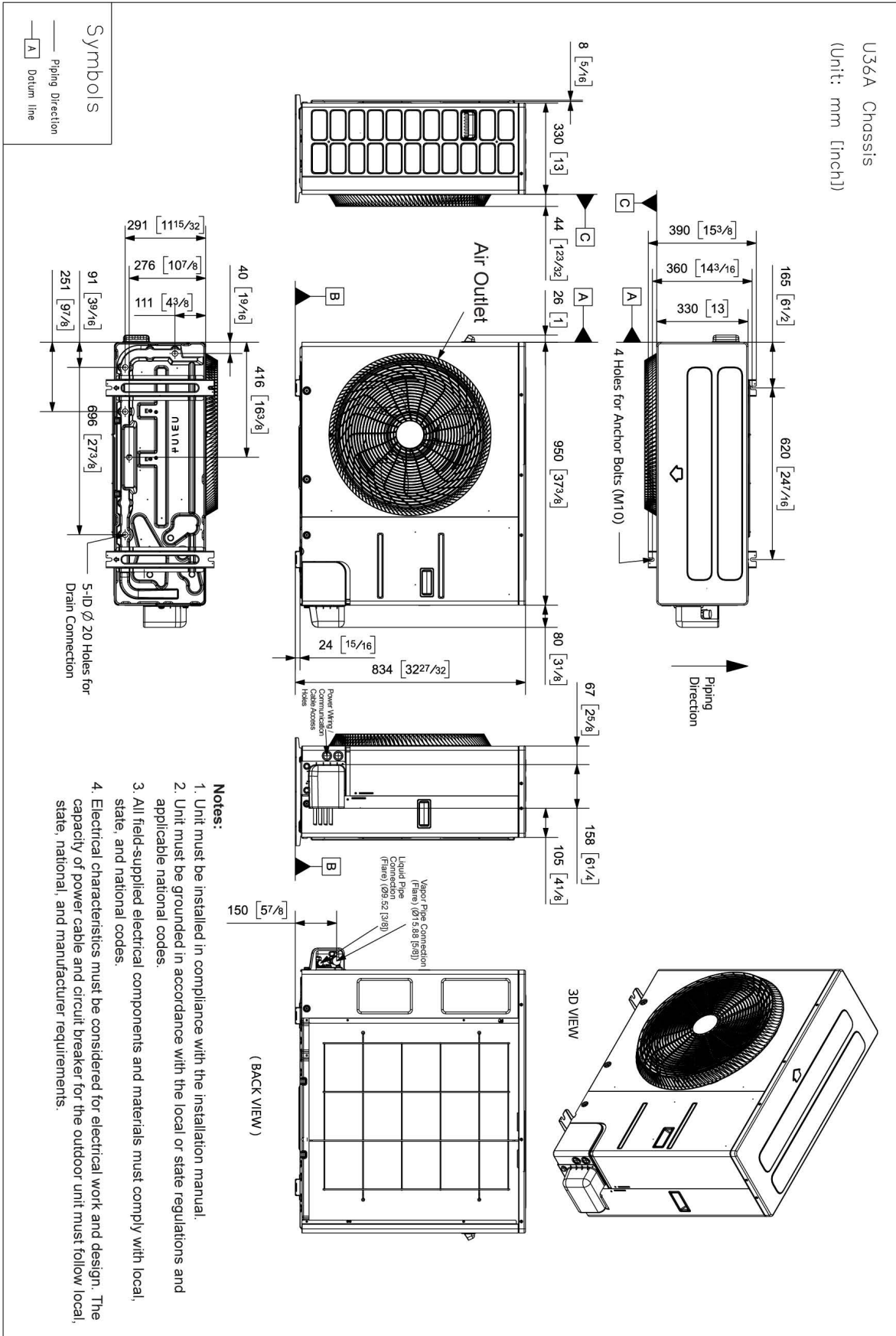
Outdoor Unit (ODU) - KUSXA181A, Indoor Unit (IDU) -KNUDB181A



Tag No.: _____

Date: _____

PO No.: _____



KSUDA181A

R32 Single-Zone 2x2 Four-Way Ceiling Cassette with LGRED®

Outdoor Unit (ODU) - KUSXA181A, Indoor Unit (IDU) - KNUDB181A



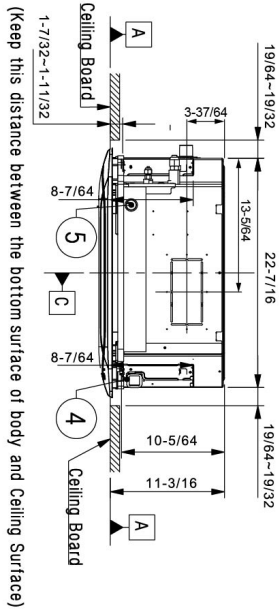
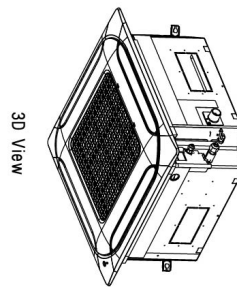
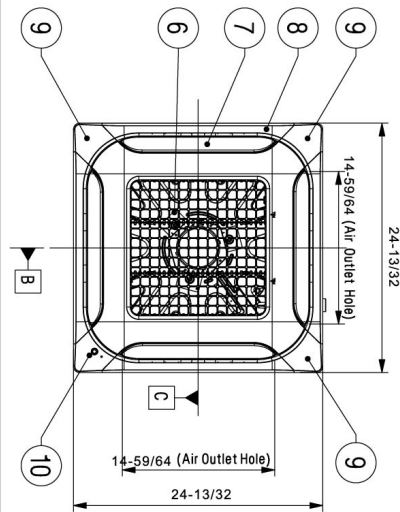
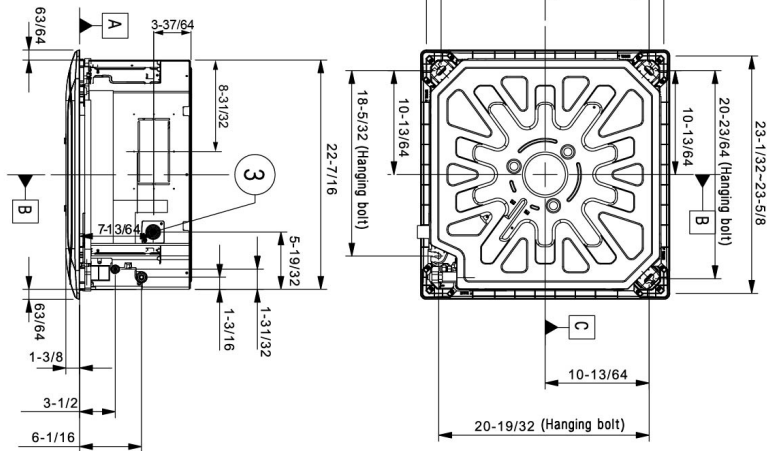
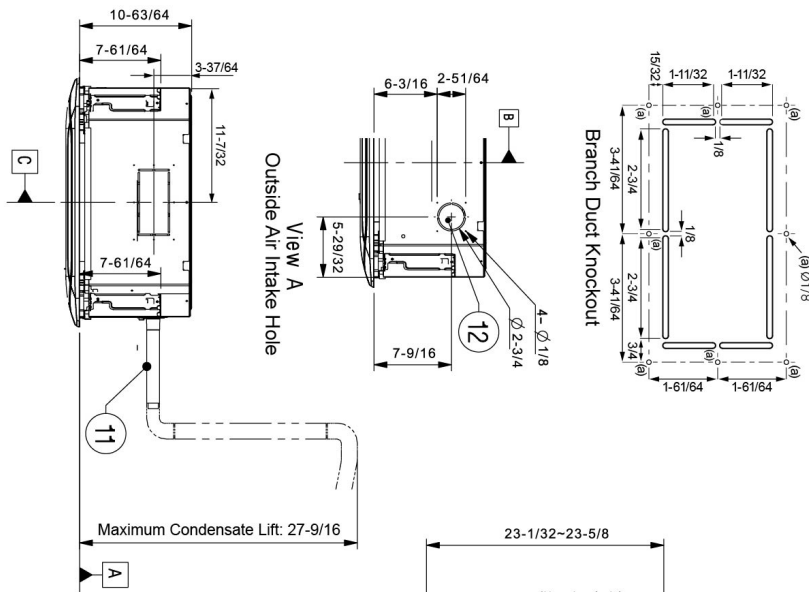
Tag No.: _____

Date: _____

PO No.: _____

- Note:**
1. Unit should be installed in compliance with the installation manual.
 2. Unit should be grounded in accordance with the local regulations or applicable national codes.
 3. All electrical components and materials to be supplied from the site must comply with the local regulations or international codes.

- Symbols**
- View Direction
 - ◀ Datum line
 - ↔ Refrigerant/Drain Piping Direction



(Keep this distance between the bottom surface of body and Ceiling Surface)

No.	Part Name	Description
12	Outside Air Intake Hole	Knock-out type
11	Flexible Drain Hose	Supplied with product
10	Decoration Corner Display Cover	Supplied with panel
9	Decoration Corner Cover	Supplied with panel
8	Decoration Panel (Accessory)	PT-0AGW0
7	Air Outlet	-
6	Air Intake	-
5	Wired remote controller wire routing hole	-
4	Power and Communication cable routing hole	-
3	Drain Pipe Connection	-
2	Liquid Pipe Connection	-
1	Vapor Pipe Connection	-