

Job Name/Location:

Tag No.:

Date:

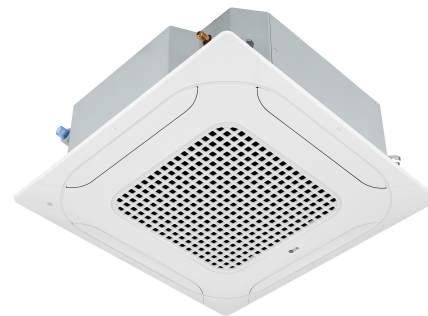
For:	File	Resubmit
	Approval	Other_____

PO No.:

Architect: _____ GC: _____

Engr: _____ Mech: _____

Rep: _____
(Company) (Project Manager)



ZRNU183TQAA

R32 Multi V™ Four-Way 2' x 2' Ceiling Cassette

19,100 Btu/h Indoor Unit

Performance:

Cooling Capacity (Btu/h) ¹	19,100
Heating Capacity (Btu/h) ¹	21,500
L/M/H Power Input at Factory Default (W)	19 / 22 / 25

Rated capacity is certified under AHRI Standard 1230. Ratings are subject to change without notice. Current certified ratings are available at www.ahridirectory.org.

Piping:

Refrigerant	
Liquid Line (in., O.D.)	1/4 Flare
Vapor Line (in., O.D.)	1/2 Flare
Condensate	
Condensate Line (in., O.D., I.D.)	1-1/4, 1
Factory Installed Pump ²	Yes

Controls Features:

- Auto changeover (Heat Recovery only)
- Auto operation
- Auto restart
- Dual thermistor control
- Dual setpoint control
- Timer (on/off)
- Weekly schedule
- Fan speed control
- Auto direction/swing (up/down)
- Swirl wind (alternating vanes)
- Jet cool (fast cooling)
- Filter life display
- Multiple auxiliary heater applications
- Child lock
- Group control
- High ceiling
- Hot start
- Self diagnostics
- External on/off control
- Wi-Fi compatible
- Auto fan
- R32 leak detection sensor

Required Accessories:

- Panel (24-13/32" x 24-13/32") - PT-QAGW0

Optional Accessories:

- Ventilation Flange - PTVK430
- Auxiliary Heater Kit⁵ - PRARH1
- Wi-Fi Module - PWFMD200

Controller Options:

- Wireless Remote Controller
- MultiSITE™ CRC* Controllers
- Simple Remote Controllers
- Standard III Remote Controllers
- Remote Temperature Button Sensor
- Dry Contacts

Electrical:

Power Supply (V/Hz/Ø)	208-230/60/1
Rated Amps	0.25

Entering Mixed Air:

Cooling Maximum ¹ (°F WB)	76
Heating Minimum (°F DB)	59

Unit Data:

Refrigerant Type	R32
Refrigerant Control	EEV
Sound Pressure dB(A) (H/M/L) ³	37 / 35 / 34
Sound Power dB(A) (H/M/L) ⁴	52 / 50 / 46
Standard Filter Type	Washable
Unit Net Weight (lbs.)	31.3
Unit Shipping Weight (lbs.)	36.8
Panel Net Weight (lbs.)	7
Panel Shipping Weight (lbs.)	11

Fan:

Type	Turbo
Quantity	1
Motor/Drive	Brushless Digitally Controlled/Direct
Motor Quantity	1
Air Flow Rate H/M/L (CFM)	396 / 388 / 353

Notes:

1. See Engineering Manual for sensible and latent capacities.
2. Maximum lift is 27-9/16 inches from bottom of unit.
3. Sound Pressure levels are tested in an anechoic chamber under ISO Standard 3745.
4. Sound Power levels are tested in a reverberation chamber under ISO Standard 3741.
5. If a Third-Party Dry Contact and an LG internal heater or an LG Auxiliary Heater Kit is installed, supplemental heat capability cannot be controlled by the Third-Party Thermostat.
6. Communication cable between (main) outdoor unit to indoor units / heat recovery units to be 18 AWG, 2-conductor, twisted, stranded, shielded. Ensure the communication cable shield is properly grounded to the (main) outdoor unit chassis only. **DO NOT** ground the outdoor unit to indoor units / heat recovery units communication cable at any other point. Wiring must comply with all applicable local and national codes.
7. Power wiring is field provided, and must comply with the applicable local and national codes.
8. This unit comes with a dry nitrogen charge.
9. All capacities are net with a combination ratio between 95 – 105%.
10. Must follow installation instructions in the applicable LG installation manual.



ZRNU183TOAA
R32 Multi V™ Four-Way 2' x 2' Ceiling Cassette
 19,100 Btu/h Indoor Unit



Tag No.: _____

Date: _____

PO No.: _____

