

Let's build the **good life** together



Package Guide

Volume 1



LG is America’s most reliable line of home appliances and the #1 appliance brand in the U.S.*

LG brings innovative technologies, unique products and cutting-edge design to make customers’ lives better. LG freestanding and built-in appliances allow customers to enjoy power and precision in an upbeat and accessible way. From the A.I.-powered Washer to the InstaView® ThinQ® Range with Air Fry to the highly acclaimed LG InstaView® Door-in-Door® Refrigerator with Craft Ice™, LG is leading the way to a better life in the kitchen and laundry room.



Leading the Way in Innovation, Quality and Trust



The Gold Standard in Reliability

LG is committed to ensuring that each of our products perform at the highest level for years to come. We are constantly innovating and pride ourselves in creating the most reliable appliances on the market.



LG Honored 12 Times Since 2012

This prestigious honor recognizes LG’s exemplary commitment to protecting the environment through leadership in ENERGY STAR® Certified products and promotions.

*#1 Appliance Brand in the US | Source: OpenBrand MindShare (AHAM Core 6) 2024-2025

Award Winning Products



LG Refrigerators

- Apartment Therapy/The Kitchen: Best in Show 2024
- Consumer Reports: Best Counter-Depth Refrigerators of 2024
- Consumer Reports: Best French-Door Refrigerators of 2024
- Consumer Reports: Best Top Freezer Refrigerators of 2024
- Consumer Reports: Best Refrigerator Brands



LG Cooking

- Reviewed Online: Best Ranges of 2024
- Tom's Guide: Best Gas Ranges for 2024
- Consumer Reports Online: Best Over-the-Range Microwaves of 2024
- Apartment Therapy: The 10 Best New Home Appliances and Electronics on Our Wish List from IFA Berlin 2024
- The Kitchen: Our Top 9 Favorite New Kitchen Products from IFA Berlin 2024
- Good Housekeeping Online: 7 Best Professional Gas Ranges and High-End Stoves, Tested by Experts



LG WashCombo™

- 2024 CES Innovation Award
- Tom’s Guide: Best of CES 2024
- Allergy Standards: Smart Connected Healthier Home Award
- 2024 Best of KBIS – finalist
- Designhounds KBIS Top 5 Award

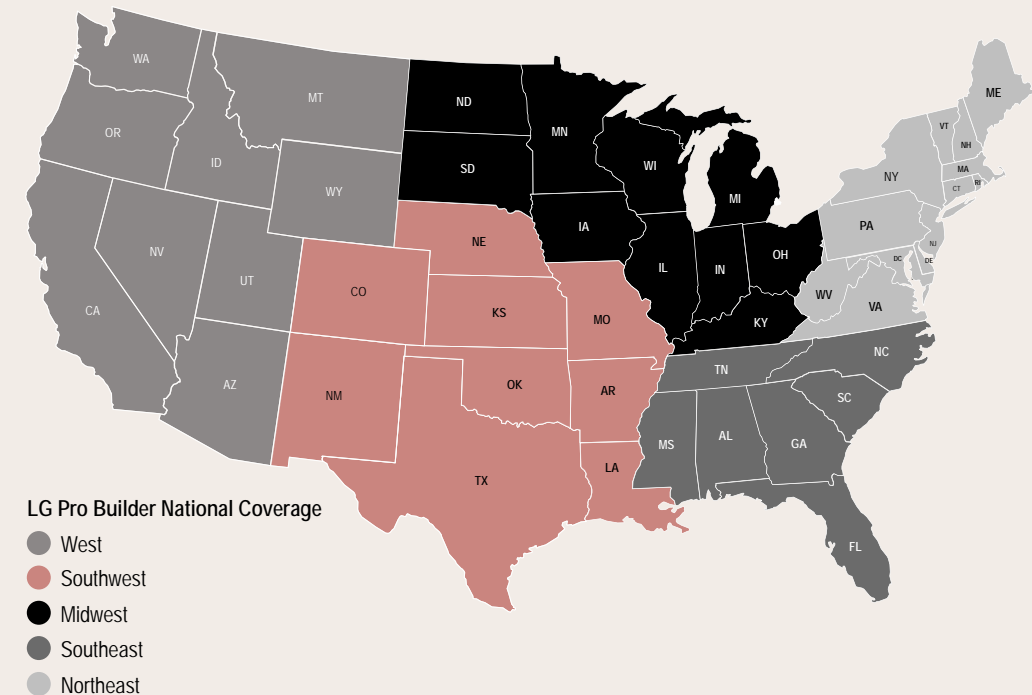


LG Styler™ Steam Closet

- Tech Advisor: The Best of CES 2024 Awards
- Best Products: The Best of CES 2024
- Wellness Spotters Award
- Designhounds KBIS Top 5 Award

LG Has Been Building Better Lives Since 1958

LG Pro Builder is a powerful, nationwide sales unit dedicated to meeting builder needs of every size and scale with a seamless experience from product creation, selection, and installation. Our size and strength is supported by the LG Electronics global family, with manufacturing presence in countries such as US, Mexico, and Korea. So we're always ready when, and where, you need us.



Let's Build the Good Life Together

Our team is built to embrace a dynamic market with customizable options for every home and owner. We believe in a home, business, and world that's made stronger by the power of optimism sparked by a life at home that's beautiful, functional, and innovative.

To bring this vision to life, our partnership promises:

- Award-winning reliability
- Elevation through design
- Cutting-edge and user-friendly embedded technology

All backed by a service commitment to making your life as good as the one you're building.



LG is One of the Most Reliable Lines of Home Appliances According to Consumer Reports.*

Rated, Reliable and Recommended



Pictured LDFC2423V, MVEL2033F, WM4000HBA, DLEX4000B, LW12241VSM, LRSXS2706V, CBGJ3623S, LSIL6336FE, WSEP4727F are recommended by Consumer Reports.



Check out the CR recommended LG models



LG is one of the most reliable lines of home appliances according to Consumer Reports*

LG is committed to creating products that perform at the highest level. Quality is ingrained in every aspect of our process, from selecting the finest components to the tireless innovation of our engineers. Our commitment extends beyond embracing cutting-edge technology; it's about creating durable products that withstand the test of time.

*Consumer Reports does not endorse products or services.
**Source: US Delineate Shopper Tracker-Q2, 2025
***Homeowners may be eligible for a 3-year limited warranty when purchasing an upgraded kitchen package that includes laundry and refrigeration. Terms and restrictions apply. Reach out to an LG Pro Builder representative for more details.

LG Pro Builder Advantage

Consumer preference

The proven love of the LG brand, known for making life good.

1st in market for consumer consideration in laundry and refrigeration with other product categories close behind – and among the top in market that consumers say is worth paying more for**.

Dedicated service

On-demand support built into our teams, our process, and our products themselves. LG support is trained by factory service technicians.

Powerful network

A network of better products and dedicated sales and distribution people that work in tandem to ensure a personalized experience in every build. A dedicated builder sales force that spans across the U.S. with over 200+ supporting distribution partners.

3 year warranty

When your homeowner adds both laundry and refrigeration to their LG appliance selections, pre-close on a for sale home, LG will extend the warranty on all included LG and LG STUDIO appliances to a 3 year limited warranty***.

Unparalleled quality

Reliability and innovation wrapped in beautiful design in every product, for every home. More #1 rankings than any U.S. brand.

Step-up Your Success

Must-Have Brands for Every Customer



The comprehensive LG line of appliances delivers on performance and reliability, all at an affordable price.



Innovate with freestanding and built-in appliances that will perform as good as they look.



Lead with luxury. For high-end kitchens, this built-in line sets the standard for innovation and design.



Reliable, Rated and Recommended



Stay Creative with



SKS SIGNATURE KITCHEN SUITE
Step Up to Luxury





LG is America's most reliable line of home appliances and the #1 appliance brand in the U.S.*

With a complete line of appliances, LG gives you performance and reliability at an affordable price. Our products are designed to enhance your everyday life with cutting-edge technology, sleek designs, and exceptional performance. From smart refrigerators and washing machines to advanced ovens and ranges, LG appliances are built to provide convenience, efficiency, and style. With a commitment to sustainability and customer satisfaction, LG continues to set the standard in the home appliance industry, making life good for millions of households around the world.

Life's Good.

All LG products are backed by a 1-year limited warranty for peace of mind.

*#1 Appliance Brand in the US | Source: OpenBrand MindShare (AHAM Core 6) 2024-2025



Reliable, Rated and Recommended by Consumers. This package offers you no compromise when it comes to functionally and cost efficient. Enhance the kitchen with style feature throughout from our sleek slide-in range, a full stainless tub dishwasher, and a large capacity smart refrigerator.



LSEL6330SE
6.3 cu. ft. 30" Electric Slide-in Range

- EasyClean®
- 2 Dual Elements (UltraHeat™)



OR



LSGL5830S
5.8 cu. ft. 30" Gas Slide-in Range

- EasyClean®
- SuperBoil 17k BTU Power Burner



MVEM1621Y
1.6 cu. ft. Over-the-Range Microwave Oven

- 1,000 Watts
- Convertible Fan
- 300 CFM Exhaust Fan



LS27H3230S
27 cu. ft. Side-by-Side Refrigerator

- SpacePlus® Ice System
- Multi-Air Flow
- SmartDiagnosis
- LG ThinQ® (Wi-Fi)



LDFC2423V
Front Control Dishwasher

- LoDecibel® (52 dBA)
- Auto Leak Detection
- NeveRust™ Stainless Steel Tub



Additional Options



LREL6321S
6.3 cu. ft. 30" Electric Range

- EasyClean®
- 2 Dual Elements (UltraHeat™)
- LG ThinQ® (Wi-Fi)



OR



LRGL5821S
5.8 cu. ft. 30" Gas Range

- EasyClean®
- SuperBoil 17k BTU Power Burner
- LG ThinQ® (Wi-Fi)



MVEM1721F
1.7 cu. ft. Over-the-Range Microwave Oven

- 1,000 Watts
- 300 CFM Exhaust Fan



LT18S1100 (Optional Ice Maker – LK50C)
LT18S1200 (With Ice Maker)
17.54 cu. ft. Top Freezer Refrigerator

- 28" Width
- Multi-Air Flow
- Inverter Compressor



The Smart Home package gives homeowners connectivity at their fingertips through our advanced ThinQ® technology for ease of use. This kitchen boasts a sleek, modern appliances with a refined premium handle design.



LREN6323YE

6.3 cu. ft. 30" Electric Range

- Built-in Air Fry
- ProBake® Convection
- 2 Dual Elements (UltraHeat™)
- LG ThinQ® (Wi-Fi)



LRGN6323Y

6.3 cu. ft. 30" Gas Range

- Built-in Air Fry
- ProBake® Convection
- UltraHeat™ 20k BTU Power Burner
- LG ThinQ® (Wi-Fi)



MVEM1825X

1.8 cu. ft. Over-the-Range Microwave Oven

- 1,000 Watts
- Sensor Cooking
- 300 CFM Exhaust Fan
- LG ThinQ® (Wi-Fi)



LS27T3230S

26.6 cu. ft. 36" Wide Side-by-Side Refrigerator

- SpacePlus® Ice System
- Multi-Air Flow
- SmartDiagnosis
- LG ThinQ® (Wi-Fi)



LDTH555NS

Top Control Wi-Fi Enabled Dishwasher

- 1 Hour Wash and Dry
- LoDecibel® (46 dBA)
- Auto Leak Detection
- LG ThinQ® (Wi-Fi)



Additional Options



LSEL6333XE

6.3 cu. ft. Electric Slide-in Range

- Built-in Air Fry
- Fan Convection
- 2 Dual Elements
- LG ThinQ® (Wi-Fi)



LSGL5833X

5.8 cu. ft. Gas Slide-in Range

- Built-in Air Fry
- Fan Convection
- UltraHeat™ 20k BTU Power Burner
- LG ThinQ® (Wi-Fi)



LF24Z6530S

23.7 cu. ft. 36" Wide Counter-Depth MAX™ Refrigerator

- Dual Ice Maker with Craft Ice™
- Zero Clearance Hinge System
- Premium Handle
- LG ThinQ® (Wi-Fi)



Our Essential Built-in package option creates an elevated look for any kitchen, providing you duality with a choice of electric or gas cooktop. Complete your kitchen with one of LG's largest capacity counter-depth refrigerators, 1-hour wash and dry cycle dishwasher, and wall oven with SmartDiagnosis and smart recipes.



HUEZ3013S

30" Under-Cabinet Hood

- 250 CFM Blower
- 5 11/22" Height
- 2-Speed Rocker Switch Controls



MSER2090S

2.0 cu. ft. Countertop Microwave Oven

- 1,200 Watts
- Sensor Cooking
- Optional Built-in Trim Kit MK2030NST



CBEW3013BE

30" Electric Cooktop

- Radiant Cooktop with 4 Elements
- Dual 9 3/16" / 5 7/8" Element
- LG ThinQ® (Wi-Fi)



CBGJ3023S

30" Gas Cooktop

- 5 Sealed Burners
- UltraHeat™ 20,000 BTU Center Burner
- Auto Reignition



WSEP4721S

4.7 cu. ft. Single Wall Oven

- EasyClean® + Self Clean
- 2 Heavy Duty Racks
- LG ThinQ® (Wi-Fi)



LRFLC2706S

26.5 cu. ft. Counter-Depth MAX™ French Door Refrigerator

- Door Cooling+
- Cool Guard Stainless Steel Back Wall
- LG ThinQ® (Wi-Fi)



LDPH5554S

Top Control Dishwasher

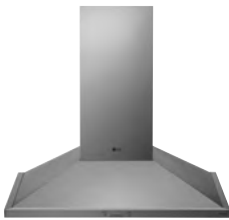
- 1 Hour Wash and Dry
- LoDecibel™ (46 dBA)
- NeveRust™ Stainless Steel Tub
- LG ThinQ® (Wi-Fi)



Featuring LG's cutting-edge Zero Clearance™ Refrigerator with a sleek flush design and seamless zero interference hinge, the Built-in Smart Home package will enhance your kitchen with smart capabilities within your cooktop with hood sync, smart oven functions, and customizable download cycles.



This package boasts the premium built-in look while delivering the best-of-the best in functionality and innovation. Whether it's refrigeration, cooking, or cleaning, every appliance is crafted to enhance both your kitchen's look and your daily convenience.



HCED3615S
36" Wall Mount Chimney Hood

- Powerful 600 CFM Blower
- 5" Low-Profile Body
- LG ThinQ® (Wi-Fi)



OR



CBEW3617BE
36" Induction Cooktop

- UltraHeat™ 5.0kW Dual Element
- Flexible Cooking Zone
- Power Boost Mode
- LG ThinQ® (Wi-Fi)



CBGJ3627S
36" Smart Gas Cooktop

- 5 Sealed Burners
- Dual Stacked 22,000 BTU
- Cast-Iron Griddle
- LG ThinQ® (Wi-Fi)



WDEP9421S
Double Wall Oven

- 9.4 cu. ft. Total Capacity (4.7 cu. ft. Upper & Lower)
- 4 Heavy Duty Racks
- EasyClean® + Self Clean
- LG ThinQ® (Wi-Fi)



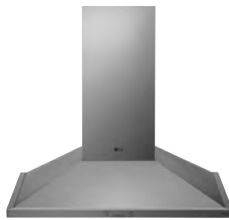
LF25Z6211S
25 cu. ft. Counter-Depth MAX™ 3-Door French Door Refrigerator

- Zero Clearance™ Hinge System
- Door Cooling
- Cool Guard Stainless Steel Back Wall
- LG ThinQ® (Wi-Fi)



LDNPM545S
Top Control Dishwasher

- 1 Hour Wash and Dry
- LoDecibel® (46 dBA)
- 3rd Rack
- LG ThinQ® (Wi-Fi)

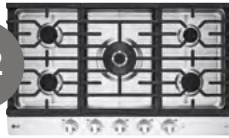


HCED3615S
36" Wall Mount Chimney Hood

- Powerful 600 CFM Blower
- 5" Low-Profile Body
- LG ThinQ® (Wi-Fi)



OR



CBIH3617BE
36" Induction Cooktop

- Induction Cooktop with 5 Elements
- 5.0kW Power Element
- Dual Zone Center Element
- Power Boost and Simmer Keys
- LG ThinQ® (Wi-Fi)



CBGJ3627S
36" Smart Gas Cooktop

- 5 Sealed Burners
- Dual Stacked 22,000 BTU
- Cast-Iron Griddle
- LG ThinQ® (Wi-Fi)



WCEP6427F
6.4 cu. ft. Combination Wall Oven

- 1.7 cu. ft. Microwave / Convection / Speed Cook Oven
- 4.7 cu. ft. Oven with Steam Cooking
- Air Fry
- Steam Bake and Sous Vide
- True Convection
- Trim Kit Included
- LG ThinQ® (Wi-Fi)



LF26C8210S
26 cu. ft. Counter-Depth MAX™ French Door Refrigerator

- Full-Convert Drawer
- Soft-Closing Door
- LG ThinQ® (Wi-Fi)



LDPH7972S
Top Control Dishwasher

- 1 Hour Wash and Dry
- 10 Wash Cycles & 8 Options
- LoDecibel™ (42 dBA)
- NeveRust™ Stainless Steel Tub
- LG ThinQ® (Wi-Fi)



Stay creative with LG STUDIO

Innovative freestanding and built-in appliances that perform flawlessly, for style-conscious customers. Our lineup of LG STUDIO high-end appliances are designed with thoughtful innovation and details that cater to a unique taste. From elevated finishes that complement any aesthetic to statement pieces that make a room stand out, LG STUDIO design-led appliances help make your space yours.



Peace of Mind

LG STUDIO appliances are backed by our exclusive 2-year limited warranty, so customers can confidently enjoy their appliances for years to come.

The Essence White finish from LG STUDIO lets you upgrade your space with a lineup of appliances that are designed with thoughtful innovation and details that cater to your unique taste, so your home reflects who you are. The Essence White Designer Package offers not only comprehensive hardware, but also innovative features that make your space stand out.



MHEI1738N 1.7 cu. ft. Over-the-Range Microwave Oven

- 300 CFM Exhaust Fan
- Air Fry
- Stainless Steel Interior



LSES6338N 6.3 cu. ft. 30" Electric Slide-in Range

- 3-in-1 Element (UltraHeat+)
- Built-in Air Sous Vide and Air Fry
- ProBake® Convection
- LG ThinQ® (Wi-Fi)



LSIS6338NE 6.3 cu. ft. 30" Induction Slide-in Range

- 4.3 kW Induction Element
- Built-in Air Sous Vide and Air Fry
- ProBake® Convection
- LG ThinQ® (Wi-Fi)



LSGS6338N 6.3 cu. ft. 30" Gas Slide-in Range

- 22k BTU Power Burner
- Built-in Air Sous Vide and Air Fry
- ProBake® Convection
- LG ThinQ® (Wi-Fi)



SRFB27W3 27 cu. ft. 36" Wide Refrigerator

- Counter-Depth MAX™
- Premium LED Lighting
- LG ThinQ® (Wi-Fi)



SDWB24W3 Top Control Dishwasher

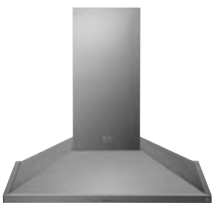
- 1 Hour Wash and Dry
- QuadWash® Pro and TrueSteam®
- LoDecibel® (40 dBA)
- NeveRust™ Stainless Steel Tub
- LG ThinQ® (Wi-Fi)



From elevated finishes that complement any aesthetic to statement pieces that make your room stand out, LG STUDIO design-led appliances help make your space yours. This aesthetic mixes metal and glass to enhance the elegance of an otherwise minimalist design.



Whether your space is zen-like or high energy, comforting or bold, LG STUDIO appliances complement your design and your personal taste. The Premier Designer Package promises reliability while keeping your personal aesthetic alive by having panel-ready options that fit seamlessly into your space.



LSHD3080ST
30" Wall Mount Chimney Hood

- Powerful 600 CFM Blower
- 5" Low-Profile Body
- Ceilings up to 9' 6"
- LG ThinQ® (Wi-Fi)



OR



LSCE305ST
30" Electric Cooktop

- Radiant Cooktop with 5 Elements
- Steady Heat Elements
- Dual 9" / 6" Element
- Warming Function



CBGS3028S
30" Gas Cooktop

- 5 Sealed Burners
- Dual Stacked UltraHeat™ 24,000 BTU Center Burner (650 BTU Simmer)



WDES9428F
Double Wall Oven

- 9.4 cu. ft. Total Capacity (4.7 cu. ft. Upper & Lower)
- Air Fry (Upper)
- Steam Bake and Sous Vide (Upper)
- True Convection
- LG ThinQ® (Wi-Fi)



SRSXB2622S
25.6 cu. ft. 42" Wide Built-in Side-By-Side Refrigerator

- Stainless Steel Tall Ice & Water Dispenser
- SpacePlus® Ice System
- Soft Closing Door
- LG ThinQ® (Wi-Fi)



SDNTHS72S
Top Control Dishwasher

- 1 Hour Wash and Dry
- QuadWash® Pro and TrueSteam®
- 3rd Rack
- LoDecibel® (39 dBA)
- NeveRust™ Stainless Steel Tub
- LG ThinQ® (Wi-Fi)



LSHD3680ST
36" Wall Mount Chimney Hood

- Powerful 600 CFM Blower
- 5" Low-Profile Body
- Ceilings up to 9' 6"
- LG ThinQ® (Wi-Fi)



CBIS3618B
36" Induction Cooktop

- 5 Elements
- Flex Cooking Zone
- Dual Zone Center Element
- LG ThinQ® (Wi-Fi)



WCES6428S
Combination Double Wall Oven

- 1.7 cu. ft. Microwave / Convection / Speed Oven
- 4.7 cu. ft. Oven with Steam Cooking
- True Convection
- Air Fry (Lower)
- Steam Sous Vide (Lower)
- LG ThinQ® (Wi-Fi)



SRFB27S3
27 cu. ft. Counter-Depth MAX™ 3-Door French Door Refrigerator

- Factory Installed Ice Maker
- LG ThinQ® (Wi-Fi)



SDWD24P3
Panel Ready Top Control Dishwasher

- Auto Open Dry System
- 10 Wash Cycles & 9 Options
- LoDecibel™ (45 dBA)
- NeveRust™ Stainless Steel Tub
- LG ThinQ® (Wi-Fi)





SKS | SIGNATURE
KITCHEN
SUITE

Step Up to Luxury

For the high-end kitchen, this built-in line of luxury appliances is a leader in innovation and design. At SKS, we're embracing a new generation of forward-thinking cooks who are combining their passion for food with their appreciation for innovation. Just like you, we're dedicated to perfection in the kitchen. As the final step in food's long journey to the table, our appliances are designed to ensure everything you create stays True to food™.

Support That's True to You

Our innovative thinking extends beyond our appliances to our service. We offer one of the industry's best warranties—a comprehensive 3-year coverage for all parts and labor. Enjoy peace of mind with our exclusive **5-Day Repair Promise, a 2-hour service window**, and well-equipped repair technicians.

For the full SKS line of appliances, visit sksappliances.com

The 36" Technicurean Pro package provides ultimate versatility in cooking and entertaining for home chefs. Choose from induction or gas, or have it all and built-in sous vide on our Dual-Fuel Pro Range. The French Door Refrigerator provides ample space for favorite foods while presenting them in the most convenient and stylish ways with features like an ingenious 5-mode convertible drawer and internal water dispenser. The Signature Fit™ integrated design allows for true flush installation, with drawers that line up with standard countertop height.



SKSPH3602S

36" Pro-Style Wall Hood

- VMAX™ Technology*
- 5 Speed Levels
- Electronic Touch Controls
- LG ThinQ® (Wi-Fi)



SKSGR360GS

36-Inch Gas Pro Range

- Two Ultra-High Burners
- Two Ultra-Low Burners
- Built-in Wok Grate
- ProHeat® Convection
- LG ThinQ® (Wi-Fi)



SKSDR360SIS

36-Inch Dual-Fuel Pro Range

- Built-in Sous Vide
- Ultra-High Burner and Ultra-Low Burner
- One Flex Induction Cooking Zone
- True Steam-Combi Oven
- LG ThinQ® (Wi-Fi)



SKSIR360IS

36-Inch Induction Pro Range

- 7,000W 11" Dual Center Element
- Two Flex Induction Cooking Zones
- Steam-Combi Convection
- LG ThinQ® (Wi-Fi)



SKSFD3604P

36-Inch Built-in French Door Refrigerator

- Panel Ready**
- Signature Fit™ Integrated Design
- Convertible Fridge/Freezer Drawer
- LG ThinQ® (Wi-Fi)



SKSDW2411S

PowerSteam® Stainless Steel Dishwasher

- 1-Hour Wash and Dry Cycle
- EasyRack™ Plus
- LG ThinQ® (Wi-Fi)



*The Variable Maximum CFM feature can limit the maximum blower CFM to meet local code requirements.
**Shown with professional stainless steel panel and handle accessory kit SKSPK360FS.

For those whose appreciation for clean lines is matched only by their passion for delicious food, we offer the 48" Transitional Design package. From the Gourmet AI™ camera in our Combi Wall Oven to the 5-mode convertible drawer and dual ice maker with Craft Ice™ in our French Door Refrigerator, to the industry-first built-in sous vide on our Pro Range, these luxury appliances are loaded with True to Food™ innovations and leading-edge technology, in a sleek, minimalist design.



Enhance your clients' packages with Built-in Column and Undercounter refrigerators. Our extra-large capacity refrigerator columns offer some of the most versatile interior configurations in the industry, with exclusive Lift and Go™ drawers and fully adjustable door bins. Undercounter Convertible Refrigerator/Freezer Drawers make entertaining easy anywhere in the house with two ingenious drawers offering 6 preset temperature modes.



SKSHI480IS

48-inch Custom Hood Insert

- Professional-Style Baffle Filters
- Variable Maximum CFM
- LG ThinQ® (Wi-Fi)



OR



SKSDR480GS

48-inch Dual-Fuel Pro Range

- Chromium Griddle
- Three Ultra-High Burners and Three Ultra-Low Burners
- True Steam-Combi Oven
- Self Clean and SpeedClean®

SKSDR480SIS

48-inch Dual-Fuel Pro Range

- Built-in Sous Vide
- Two Ultra-High Burners and Two Ultra-Low Burners
- Two Induction Zones
- Steam-Combi Convection Oven
- Self Clean and SpeedClean®

SKSCV3012MT

30-inch Built-in Combination Wall Oven

- Upper: 1.7 / Lower: 4.7 cu. ft.
- Gourmet AI™
- Steam-Combi Convection
- Steam Sous Vide & Air Fry Cooking Mode
- LG ThinQ® (Wi-Fi)



SKSFD4826MT

48" Pre-assembled Built-in French Door Refrigerator

- Convertible Fridge/Freezer Drawer
- Dual ice maker with Craft Ice™
- LG ThinQ® (Wi-Fi)



SKSDW2411T

24-inch Powersteam® Stainless Steel Dishwasher

- 1-Hour Wash and Dry Cycle
- QuadWash® Pro High Pressure Water Jets
- Dynamic Heat Dry™ System
- LG ThinQ® (Wi-Fi)



SKSCF3001P

30-inch Panel-Ready Integrated Column Freezer

- Available in 18", 24" and 30"
- Largest Capacity Column
- LG ThinQ® (Wi-Fi)



SKSCR3001P

30-inch Panel-Ready Integrated Column Refrigerator

- Available in 24" and 30"
- Largest Capacity Column
- LG ThinQ® (Wi-Fi)



SKSCW241RP

24-inch Panel-Ready* Integrated Column Wine Refrigerator

- Available in 18" and 24"
- Wine Cave Technology™
- Independent Temperature Zones
- LG ThinQ® (Wi-Fi)



SKSUD2402P

24-Inch Panel-Ready Built-in Undercounter Convertible Refrigerator / Freezer Drawers

- Dual Convertible Drawers
- Six Multi-Temp™ Options
- LG ThinQ® (Wi-Fi)



SKSUW2401P

24-inch Panel-Ready Built-in Undercounter Wine Refrigerator

- 24" Undercounter Wine
- Two Independent Temperature Zones
- Panel-Ready
- Reversible Door Swing
- LG ThinQ® (Wi-Fi)



*Stainless Panel Kits Available for All Columns and Undercounter Refrigeration



Clothing Care, Reimagined

Whether it's a loft or a mudroom, small space or large, LG has the laundry products that fit your style perfectly. With LG Styler® Steam Closet for daily refreshes, the innovative LG SideKick® for small loads that can't wait, and advanced washers and dryers, the LG Ultimate Laundry Room keeps your family's clothes looking, smelling and feeling great—every day of every week.



Direct Drive Motor 10-Year Limited Warranty

Backed by a 10-year limited warranty, the LG Direct Drive Motor delivers peace of mind with every load. Fewer moving parts means less noise and vibration, greater stability and durable performance you can depend on for years to come.

LG SIGNATURE

Our largest-capacity pair with exceptionally clean lines, extraordinary cleaning performance and built-in intelligence has an intuitive 7" LCD touchscreen that simplifies laundry.



Premium

WM9900HSA WM9900HBA

5.8 cu. ft. Front Load Washer

- Full Touch LCD Screen
- TurboWash® 360°
- AI Fabric Sensor
- ezDispense™ Automatic Dispenser
- Steam & Allergiene® Cycle
- Brushed Platinum Steel or Brushed Black Steel
- LG ThinQ® (Wi-Fi)



WD405CS WD405CB

SideKick® Pedestal Washer

WDP8S WDP8B

Storage Pedestal

DLEX9900S DLEX9900B

9.0 cu. ft. Front Load Electric Dryer

OR

DLGX9901S DLGX9901B

9.0 cu. ft. Front Load Gas Dryer

- Full Touch LCD Screen
- TurboSteam®
- SteamSanitary™ and SteamFresh™ Cycle
- AI Fabric Sensor
- FlowSense® Duct Clogging Indicator
- Brushed Platinum Steel or Brushed Black Steel
- LG ThinQ® (Wi-Fi)



Browse our collection of innovative LG WashTowers – your space-saving laundry solution with advanced washing and drying performance. With Built-In Intelligence, LG WashTower™ Takes Up Half the Space with a Dryer on Top of the Washer and Center Control.



The LG Styler® Steam Closet completely streamlines and improves the way you keep things cleaner for an endless number of clothing and household items, without extra work or harsh chemicals—just toss them in and LG Styler® takes care of the rest!



WKE100HWA
WKE100HVA
27" WashTower™ with Center Control™ and Electric Dryer
WKG101HWA
WKG101HVA
27" WashTower™ with Center Control™ and Gas Dryer

- 4.5 cu. ft Washer / 7.4 cu. ft. Dryer
- Built-in Intelligence with AIDD / AI Fabric Sensor, Smart Learner, Smart Pairing™
- White or Graphite Steel
- LG ThinQ® (Wi-Fi)



WKEX300HBA
27" WashTower™ with Center Control™ and Electric Dryer
WKGX301HBA
27" WashTower™ with Center Control™ and Gas Dryer

- 5.0 cu. ft Washer / 7.4 cu. ft. Dryer
- TurboWash® 360° Wash
- TurboSteam® Dryer
- AI DD® 2.0 Built-in Intelligence / AI Fabric Sensors, Smart Pairing™
- ezDispense™ Automatic Dispenser
- LG ThinQ® (Wi-Fi)



WKHC252HWA
WKHC252HBA
27" WashTower™ with Center Control® & Dual Inverter HeatPump™

- 5.0 cu. ft Washer / 7.8 cu. ft. Dryer
- TurboWash® 360° and Steam
- AI Fabric Sensor / Infrared Sensor / Smart Pairing™
- Auto Cleaning Condenser™ & 3-Stage Lint Filter
- White or Black Steel
- LG ThinQ® (Wi-Fi)



S3WFBN
LG Styler® Steam Closet is the Perfect Laundry Companion – White

- 11.4 lbs. / 3 Hangers + 1 Pant (4 items)
- TrueSteam®
- Refresh Clothing
- Reduce Wrinkles & Odors
- Gentle, Fast Drying for Delicates
- Pants Crease Care
- Plug & Go Installation, No Plumbing Needed
- Heat-Pump System (Inverter)
- LG ThinQ® (Wi-Fi)



S3MFBN
LG Styler® Steam Closet is the Perfect Laundry Companion – Mirror Finish

- 11.4 lbs. / 3 Hangers + 1 Pant (4 items)
- TrueSteam®
- Refresh Clothing
- Reduce Wrinkles & Odors
- Gentle, Fast Drying for Delicates
- Pants Crease Care
- Plug & Go Installation, No Plumbing Needed
- Heat-Pump System (Inverter)
- LG ThinQ® (Wi-Fi)



S5WBC
LG Styler® Steam Closet to Clean, Deodorize & Freshen – Cream White

- 14.3 lbs. / 5 hangers + 1 pant (6 items)
- TrueSteam®
- Moving Hangers
- Refresh Clothing
- Reduce Wrinkles & Odors
- Gentle, Fast Drying for Delicates
- Pants Crease Care
- Plug & Go Installation, No Plumbing Needed
- Heat-Pump System (Inverter)
- LG ThinQ® (Wi-Fi)



Whether you're working with a small closet or a dedicated laundry room, doing laundry for a big family or just yourself, LG can help you find the right lineup for your space and lifestyle. Look through our selection of WashCombo™, HeatPump and compact Specialty Laundry options designed for greater efficiency and your convenience.



At just 24" wide, these Compact washers and dryers fit easily into almost any space, with a closet depth design that even tucks behind closed doors. Despite their compact size, they score huge on the style scale and are loaded with LG innovations.



**WM6998HVA
WM6998HBA**
5.0 cu. ft. 27" Wide WashCombo™ with Heat Pump

- TurboWash® 360°
- Steam & Allergiene® Cycle
- Auto Cleaning Condenser™ & Lint Filter Indicator
- ezDispense™ Automatic Dispenser
- Graphite Steel or Black Steel
- LG ThinQ® (Wi-Fi)



**DLHC4002W
DLHC4002B**
7.8 cu. ft. 27" Wide Front Load Dryer with Dual Inverter HeatPump™

- LCD Digital Dial Control
- Built-In Intelligence: AI Sensor Dry with Infrared Sensor
- Auto Cleaning Condenser™
- Closet Depth
- White or Black Steel
- LG ThinQ® (Wi-Fi)



**DLHC5502W
DLHC5502B**
7.8 cu. ft. 27" Wide Front Load Dryer with Dual Inverter HeatPump™

- LCD Digital Dial Control
- Built-In Intelligence: AI Sensor Dry with Infrared Sensor
- Auto Cleaning Condenser™
- Closet Depth
- White or Black Steel
- LG ThinQ® (Wi-Fi)



Compact



**WM3555HWA
WM3555HVA**
2.4 cu. ft. 24" Wide Compact All-in-One Washer & Dryer Combination

- TurboWash® 360°
- AI Fabric Sensor / Smart Pairing™
- Direct Drive Motor (10-Year Limited Warranty)
- White or Graphite Steel
- LG ThinQ® (Wi-Fi)



WM1455HWA
2.3 cu. ft. 24" Wide Compact Front Load Washer

- AI Fabric Sensor
- Steam & Allergiene® Cycle
- TubClean Cycle
- TrueBalance™ Anti-Vibration
- LG ThinQ® (Wi-Fi)

DLHC1455W
4.2 cu. ft. 24" Wide Compact Front Load HeatPump Dryer (Ventless)

- Dual Inverter HeatPump™
- Ventless Design
- Auto Cleaning Condenser
- LG ThinQ® (Wi-Fi)



WKHC152HWA
24" WashTower™ with Center Control® & Dual Inverter HeatPump™

- 2.4 cu. ft. Washer / 4.2 cu. ft. Dryer
- TurboWash® 360° and Steam Technology
- AI Fabric Sensor / Smart Learner / Smart Pairing™
- LG ThinQ® (Wi-Fi)

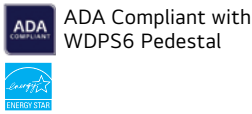


Transform laundry day with LG's front load washers, boasting ultra-capacity and smart features for a turbo-charged clean that caters to families big and small. Experience unmatched efficiency and durability, making every wash cycle faster and more convenient than ever before.

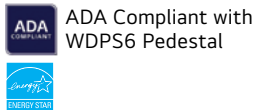


Base

- WM3400CW**
4.5 cu. ft. Front Load Washer
- 6Motion™
 - ColdWash™ Option
 - Direct Drive Motor (10-Year Limited Warranty)
 - NeveRust™ Stainless Steel Tub
 - SmartDiagnosis™



- DLE3400WL**
7.4 cu. ft. Front Load Electric Long Vent Dryer
- OR
- DLG3401W**
7.4 cu. ft. Front Load Gas Dryer
- Sensor Dry System
 - FlowSense® Duct Clogging and Lint Filter Indicators
 - SmartDiagnosis™



Upgrade

- WM4000HWA**
4.5 cu. ft. Front Load Washer
- TurboWash® 360°
 - AI Fabric Sensor / Smart Pairing™
 - ColdWash™ Option
 - LG ThinQ® (Wi-Fi)



- DLEX4000W**
7.4 cu. ft. Front Load Electric Dryer
- OR
- DLGX4001W**
7.4 cu. ft. Front Load Gas Dryer
- Sensor Dry System
 - FlowSense® Duct Clogging and Lint Filter Indicators
 - SmartDiagnosis™
 - LG ThinQ® (Wi-Fi)



Additional Options



- WM4000HBA, DLEX4000B or DLGX4001B**
- Also available in Black Steel

Premium

- WM6700HBA**
5.0 cu. ft. Front Load Washer
- TurboWash® 360°
 - AI Fabric Sensor / Smart Pairing™
 - ezDispense™ Automatic Dispenser
 - NeveRust™ Stainless Steel Tub
 - Black Steel
 - LG ThinQ® (Wi-Fi)



- DLEX6700B**
7.4 cu. ft. Front Load Electric Dryer
- OR
- DLGX6701B**
7.4 cu. ft. Front Load Gas Dryer
- TurboSteam®
 - SteamSanitary™ and SteamFresh™ Cycle
 - AI Fabric Sensor / Smart Pairing™
 - FlowSense® Duct Clogging Indicator
 - NeveRust™ Stainless Steel Tub
 - Black Steel
 - LG ThinQ® (Wi-Fi)



Trust in the reliability of LG's Top Load Washers and Dryers — a classic choice you can depend on for years to come. Customize your laundry experience with upgrades and colors tailored to your specific needs, ensuring an effortless and consistently clean wash every time.



Base

WT6105CW

4.1 cu. ft. Top Load Washer with 4-Way™ Agitator

OR

WT6100CW

4.3 cu. ft. Top Load Washer with Impeller

- TurboDrum™
- 6Motion™
- Deep Fill Option
- Direct Drive Motor (10-Year Limited Warranty)
- NeveRust™ Stainless Steel Tub

DLE6100W

7.3 cu. ft. Rear Control Top Load Electric Dryer

OR

DLG6101W

7.3 cu. ft. Rear Control Top Load Gas Dryer

- Sensor Dry System
- FlowSense® Duct Clogging Indicator
- SmartDiagnosis™



Upgrade

WT8205CW

4.8 cu. ft. Top Load Washer with 4-Way™ Agitator

OR

WT8200CW

5.0 cu. ft. Top Load Washer with Impeller

- EasyUnload™
- Built-In Intelligence: AI Fabric Sensor / Smart Pairing™
- TurboWash®
- Direct Drive Motor (10-Year Limited Warranty)
- LG ThinQ® (Wi-Fi)



DLE8200W

7.3 cu. ft. Rear Control Top Load Electric Dryer

OR

DLG8201W

7.3 cu. ft. Rear Control Top Load Gas Dryer

- Built-In Intelligence: AI Sensor Dry™ / Smart Pairing™
- Sensor Dry System
- FlowSense® Duct Clogging Indicator
- LG ThinQ® (Wi-Fi)



Additional Options



WT6105CM, DLE6100M or DLG6101M

Also available in Monochrome Gray



WT8205CL or WT8200CL, DLE8200L or DLG8201L

Also available in Platinum Black



Premium

WT8600CB

5.5 cu. ft. Top Load Washer

- EasyUnload™
- AI Fabric Sensor / Smart Pairing™
- ezDispense® Automatic Dispenser
- Water Faucet
- TurboWash3D®
- Matte Black
- LG ThinQ® (Wi-Fi)



DLEX8600BE

7.3 cu. ft. Rear Control Top Load Electric Dryer

OR

DLGX8601BE

7.3 cu. ft. Rear Control Top Load Gas Dryer

- EasyLoad™ Door
- AI Sensor Dry™ / Smart Pairing™
- TurboSteam®
- SteamSanitary™ Cycle
- SteamFresh™ Cycle
- Matte Black
- LG ThinQ® (Wi-Fi)





LG Pro Builder



Let's Build
The Good Life
Together

Visit [LGProBuilder.com](https://www.lgprobuilder.com) to find the sales representative for your area.



Design, features and specifications are subject to change without notice.
© 2025 LG Electronics USA, Inc. All rights reserved. "LG Life's Good" is a registered trademark of LG Corp. All other product and brand names are trademarks or registered trademarks of their respective companies.
03625.mcq.8/25